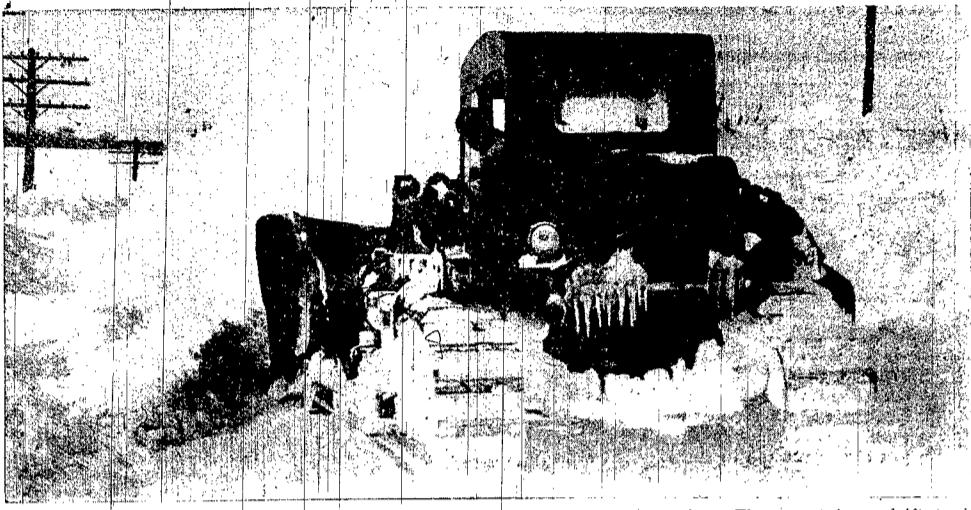


Wayne Area Battles Tons of New Snow



"Oops, this one's too big," says Neil Grimm, driver of a Wayne county snowplow. The mountainous drift, typical of those which have blocked all roads in this area, was encountered about a mile and a half west of Wayne near the Felix Dorsey farm.

Set Up County Group to Act In Emergency

Reserve of Men Ready to Work Whenever Needed

Acting on a request from Gov. Val Peterson, Wayne county last Saturday set up a relief organization to handle any emergency which might develop in this area because of existing weather and road conditions.

Among those attending the meeting were Sheriff Hans Tietken, County Clerk C. A. Dard, R. D. Sisk, and other county officials.

Equipment Unable To Cope With Task

The Wayne area this week is buried in an unending drift of snow and ice following the winter's most furious blizzard which struck last Thursday and dumped countless tons of new snow over the already heavily covered area.

As yet there has been little acute suffering in this part of Nebraska. But several emergencies have arisen which demanded prompt action.

County snowplows are making almost imperceptible progress. Meyer said that a caterpillar type plow worked all night Monday in his district and traveled only a mile and a half.

Ski-Equipped Plane on the Go Constantly

Wayne Fliers Make Several Hospital Trips

Emergency flights, few of which were of an urgent nature, have kept the Wayne Air Service's ski-equipped plane busy since the last blizzard blocked roads throughout this area.

Pilots R. G. Fuelberth and Bill Podell have flown snowbound people to their farms, made hospital trips, taken bread to isolated communities and aided the REA in locating line troubles.

Rites Today for Emma Sievers

Funeral services will be held this afternoon (Thursday) at Redeemer Lutheran church for Mrs. Emma Sievers, 79, who died of a heart ailment Saturday at the home of her son Otto, in Los Angeles, Calif.

Herald Publishes Librarian's Talk

The Herald calls the attention of its readers to an article on page 1, section 2, on the status and conditions of the Wayne public library. The article is a talk given before local organizations by Mrs. F. A. Milder, city librarian. It will be of interest to anyone who avails himself of the library's services and is interested in the future of the library.

Three Men Injured In Car-Truck Crash

Three men were hospitalized here Tuesday afternoon following an accident involving a fruit truck from Sioux City and an automobile.

Herbert Kittle and his son of Carroll were coming south on highway 15 about a mile south of the Concord spur, when they met the truck head-on in a cut. Blowing snow obscured the vision of both drivers.

The Kittle car was demolished, according to Clarence Mayhew of the safety patrol, and the truck was damaged considerably. It was towed to Sioux City and the car was brought to Wayne.

Salvation Army Drive Begins

The drive for monetary contributions to the Wayne service unit of the Salvation Army is progressing favorably, according to Adon Jeffrey, treasurer of the unit. Letters have been sent to local residents asking for their help in financing the services of the unit.

In the past year, these services have included payment of hospital bills for a high school boy, the purchase of a radio for a blind woman and contributions to a fund for clinic treatments for a local girl.

Heads Drive For Red Cross

Harold E. Hein, Wayne, has been appointed chairman of the Wayne county Red Cross chapter's 1949 campaign for funds upon the recommendation of a committee composed of William Beckenhauer, L. W. Ellis and Mrs. L. J. Kilian. Stuart Baller, Wayne, is chairman of the county chapter.

Name Wayne as Site of Two '49 District Contests

Wayne will again be host to the district speech and one-act play contest, and the district music contest this year.

Mother of Wayne Resident Dies

Mrs. Anna McDonald, mother of Mrs. L. W. Sund of Wayne, died Saturday morning at the home of her son, Earl, in Tekamah.

Bahe on State Fair Board for North Nebraska

Al Bahe, manager of the Wayne county fair, has been named to the state fair board representing 22 counties in northern Nebraska.

Spring Is Here, Says Groundhog

That cherry little varmint above the groundhog (or any) has his conviction of the poking his head out of the ground for his traditional pre-spring check-up on the weather.

Granted Semester Leave of Absence

Arlene Oberhelman, supervisor for the second grade at the campus school, has been granted a semester leave of absence on advice of her physician.

Local Librarian on State Committee

Mrs. F. A. Milder has received an appointment as chairman of the voluntary certification committee of the Nebraska Library association.

Two Wayne County Youths Inducted

Merle D. Ring of Wakefield and Richard D. Farran of Winside went to Sioux City Jan. 27 to be inducted into the army.

Hupp Farm Sale Postponed Again

Continuing bad weather has made necessary another postponement of the farm sale of W. S. Hupp, living near Carroll.

Two Cars Collide In Narrow Cut

Cars driven by Calvin Havorka of Laurel and Elray Hank of Wakefield met in a narrow cut about four and a half miles west of Wayne on highway 15 last Tuesday afternoon.

Local John Deere Program Postponed

John Deere day, planned for Feb. 2 by B. J. Brandstetter and Son, Wayne John Deere dealer, has been postponed until a future date.

Bus Stalls on Hill East of Wayne

The Sioux City to Norfolk bus was stalled for four hours last Thursday afternoon two miles north and a half mile east of Wayne.

May Inaugurate Taxi Service in Wayne

Gerhardt Plint, who has served the last 11 years as a bus driver for bus lines out of Yankton, Norfolk and Columbus, expects soon to file an application with the state railway commission for permission to operate a taxi service in Wayne.

Railroad Plow Nears Magnet

A railroad snowplow has gone through Wayne and on Wednesday was two miles east of Magnet. The first train to reach Randolph since Jan. 14 arrived in that town this week.

Farmers Help Plow on No. 35

There's no denying people are anxious to get "dug out."

Wagon Needed to Reach Hospital

Mrs. Oscar Brown of northwest of Wakefield suffered a heart attack. Because of road conditions, lack Saturday morning, at her home wagon a crew of the railroad was here a train met them. She is in a Wakefield hospital.

Highway Report

No. 15 is open from No. 275 south to No. 20 north. No. 35 was opened from Wayne to Wakefield, but drifting snow Tuesday closed some spots temporarily.

Report from Carroll Area

Carroll - All roads in the Carroll area are blocked and available equipment apparently is inadequate for the task.

Breaks Ankle in Tumble on Ice

Mrs. Ernest Harrigfeldt suffered a fractured left ankle when she fell on Main street last Thursday.

Take Fuel Oil To Three Towns

Special shipments of fuel oil went to Plainview Monday and to Hoskins Tuesday. The Plainview supply was practically gone and an attempt to reach the town Sunday was futile.

Few Stock Losses in County

Few livestock death losses directly attributable to the last blizzard and continuing severe weather conditions have been reported in this area, but there have been some losses indirectly caused by the snow and cold, according to County Agents Don Warner.

Highway Report

No. 15 is open from No. 275 south to No. 20 north. No. 35 was opened from Wayne to Wakefield, but drifting snow Tuesday closed some spots temporarily.

Report from Carroll Area

Carroll - All roads in the Carroll area are blocked and available equipment apparently is inadequate for the task.

Breaks Ankle in Tumble on Ice

Mrs. Ernest Harrigfeldt suffered a fractured left ankle when she fell on Main street last Thursday.

Take Fuel Oil To Three Towns

Special shipments of fuel oil went to Plainview Monday and to Hoskins Tuesday. The Plainview supply was practically gone and an attempt to reach the town Sunday was futile.

Few Stock Losses in County

Few livestock death losses directly attributable to the last blizzard and continuing severe weather conditions have been reported in this area, but there have been some losses indirectly caused by the snow and cold, according to County Agents Don Warner.

























LEGAL NOTICES

NOTICE TO CREDITORS
The State of Nebraska, Wayne County, ss.
In the Matter of the Estate of Joseph Baird, Deceased.

ceive and examine all claims against said estate, with a view to their adjustment and allowance. The time limited for the presentation of claims against said estate is three months from the 15th day of February, 1949, and the time limited for payment of debts is one year from said 15th day of January, 1949.

B. Romberg and Alice C. Walsh, filed their final account and petition for distribution of the residue of said estate, a determination of the heirs and for a discharge. Hearing will be had on said account and petition at the County Court Room in Wayne, Nebraska, on the 12th day of February, 1949, at 10 o'clock a.m. when all persons interested may appear to show cause why the prayer of the petitioners be not granted.

FEED
Miltrena
IT PAYS

Feeding Helters Stock Helters
Breeding Helters Stock Doves
Western Feeding Mrs. Feeding Cows
ORDERS SOLICITED
C. B. THORPE CO.
LIVE STOCK BROKERS

NOTICE OF PROBATE
In the County Court of Wayne County, Nebraska.
In the matter of the Estate of L. B. Young, Deceased. The State of Nebraska, to all persons interested in said estate:

NOTICE TO CREDITORS
The State of Nebraska, Wayne County, ss.
In the Matter of the Estate of Thomas J. S. Hughes, Absentee.

"G.E. HOUSE PARTY"
2:30 p.m.
Monday thru Friday
with
Art Linkletter, M.C.
Famous Guests
★ Quiz Fun
brought to you by your GENERAL ELECTRIC dealer
570 On Your Dial
WNAX

NOTICE TO CREDITORS
The State of Nebraska, Wayne County, ss.
In the Matter of the Estate of Abbie Albertson, Deceased.

NOTICE TO BIDDERS
Sealed proposals will be received by the Village Clerk of Hoskins, Wayne County, Nebraska, up to 2:00 p.m. on the 10th day of February, 1949, for the furnishing of all materials, labor and tools for the construction of all outlet main and lateral sanitary sewers, sewerage disposal plant and lift station and appurtenances in Sewer District No. 1 in the Village of Hoskins, Nebraska.

NOTICE OF SETTLEMENT OF ACCOUNT
In the County Court of Wayne County, Nebraska.
The State of Nebraska, Wayne County, ss.

NOTICE TO BIDDERS
Sealed proposals will be received by the Village Clerk of Hoskins, Wayne County, Nebraska, up to 2:00 p.m. on the 10th day of February, 1949, for the furnishing of all materials, labor and tools for the construction of all outlet main and lateral sanitary sewers, sewerage disposal plant and lift station and appurtenances in Sewer District No. 1 in the Village of Hoskins, Nebraska.

Business and Professional

Chiropractors

DRS. LEWIS & LEWIS
CHIROPRACTORS
(Est. 1914)
Neurotonometer Service
112 East 4th St.
Wayne, Neb.
Phone 49

Physicians

S. A. LUTGEN, M. D.
Office in the Merry Bldg.
Office 61 - Phones - House 162

Dentists

DR. GEO. H. GOBLIRSCH
Dentist
X-RAY
State National Bank Bldg.
Phone 193-W
Wayne, Neb.

Physicians and Surgeons

Walter Bentback, M. D.
Russell Rundquist, M. D.
Physicians and Surgeons
Offices at
BENTHACK HOSPITAL
Phone 106

DR. D. R. WALTERS

DR. D. R. WALTERS
Dentist
OFFICE DAYS - Tuesday - Wednesday
Monday - Office Over Bines Jewelry
PHONES
Office 424-W House 424-R

Optometrists

DR. W. A. KOEBER
Optometrist
with
Gillespie Optical Service
Wayne, Neb.

Real Estate, Insurance

CAVANAUGH
Insurance and Real Estate
Phone 84

Optical Company

PERRIGO
Optical Company
Fred M. Perrigo, O.D.
John N. Gunning, O.D.
Optometrists
416 Norfolk Avenue
Phone 380 - Norfolk, Neb.

MARTIN L. RINGER

MARTIN L. RINGER
Real Estate - Farm Loans
Writes every kind of insurance except life. Special attention to Farm and Automobile Insurance

Funeral Service

MEMBER OF
AMERICAN FUNERAL DIRECTORS ASSOCIATION
SERVING NATION-WIDE
Modern, yet homelike funeral home... Finest equipment... Reasonable price
The BECKENHAUER SERVICE
WILLARD WILTSE, Licensed Embalmer

GEO. W. DERRY

GEO. W. DERRY
Real Estate - Insurance
Farm Appraisals, 4% Farm Loans
416 Main St., Wayne

Farm Loans

Federal Land Bank
FARM LOANS
Low Interest - Long Term
National Farm Loan Assn.
Wakefield, Nebraska

Tax Service

Personalized
INCOME TAX SERVICE
Farm-Business-Individual
HOWARD M. JAMES
415 Pearl St. Phone 2-J
Office in home

Accountant

Bookkeeping for Small Businesses and Farmers
Office in Meyer Garage.
WAYNE D. MARSH
Phone 68

Osteopaths

DR. T. T. JONES
Osteopathic Physician
Eyes Examined - Glasses Fitted
Wayne, Neb.

Income Tax

Bookkeeping for Small Businesses and Farmers
Office in Meyer Garage.
WAYNE D. MARSH
Phone 68

Veterinarians

DR. E. L. HARVEY
VETERINARIAN
110 West First Street
Wayne, Neb.
Day Ph. 75 - Night Ph. 480

Table listing items for sewerage disposal plant and lift station, including materials, labor, and printing costs for various sewer lines and manholes.

Farm Sale

As I am unable to rent a farm, I will sell the following property at public auction at the place located 1 mile east and 2 miles north of Winside; 7 miles west of Wayne on No. 98 and 2 miles south; 5 miles south and 2 miles east of Carroll.

MONDAY, FEB. 7
SALE STARTS AT 1:00 P. M.

9 head Cattle



- 2 Holstein cows, fresh 2 months.
2 Holstein cows, fresh about sale date.
2 brockle faced cows, fresh before or about sale date.
Jersey cow, fresh in 30 days.
2 calves, 3 months old.

6 Brood Sows



To Farrow the First of April
4 Head Horses
Team, sorrel and bay gelding, 8 and 9 years old. A good feed team, gentle.
Black saddle mare, 5 years old, well broke.
Sorrel colt with white mane and tail, coming 2 years old.

MACHINERY

- F-30 tractor, on rubber, in A-1 condition.
Tractor cultivator.
Little Genius 3-bottom plow, on rubber.
Heat houser.
Tractor chains.
Umbrella for tractor.
Case 7-ft. power mower.
G.I. 2-row pull type corn picker, has picked 75 acres.
28-ft. harrow.
John Deere No. 999 corn planter with 160 rods of wrie.
Two wagons, complete.
Wagon with Horn flare box.
Hay rack with all steel auto-turn gear.
Two scoop boards.
Bang boards.
Flare boards.
John Deere endgate seeder.
E & B manure spreader.
Hay rake.

FARM EQUIPMENT and SUPPLIES

- Small feed bunk.
Good loading chute.
Hog trough and pans.
Daisy hog waterer with barrel.
Fuel barrels.
Barrel pump.
Two tank heaters.
Tank.
Two battery fencers.
Brooder stove, oil burning.
McCormick-Deering No. 2 cream separator with electric motor.
DeLaval cream separator.
8-gal. cream can.
Milk pails.
Chicken feeders.
Hoof trimmer.
Tools, wrenches and other small articles too numerous to mention.

500 Bushels of Marion Oats

1930 Model A Ford
Good tires and new battery

Usual Sale Terms:
No property to be removed until settled for

Russell Malmberg, Owner
T. J. HUGHES, auctioneer.
WINSIDE STATE BANK, Clerk.

